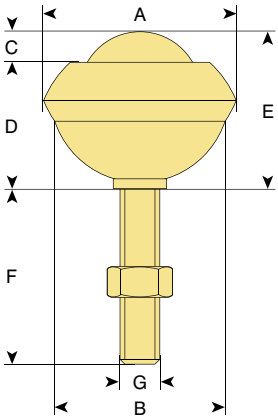


V | TYPE A | THREAD FIXING

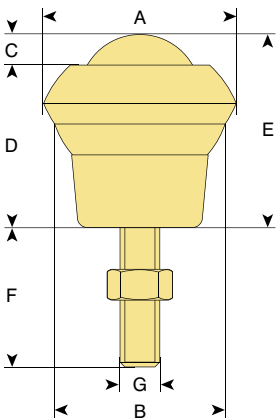
MILD STEEL, NYLON OR STAINLESS STEEL BALL



ball dia.	UNITS WITH MILD STEEL BALL							UNITS WITH NYLON BALL			COMPLETELY STAINLESS					
	A	B	C	D	E	F	G	ball up load	ball down load	ref	ball up load	ball down load	ref	ball up load	ball down load	ref
19	32.1	25.4	4.7	19.9	24.6	35.0	M8	25	10	V19A	20	10	V19A NY	25	10	V19A SS
25	39.7	32.5	6.3	26.2	32.5	35.0	M8	55	25	V25A	25	10	V25A NY	55	25	V25A SS
40	55.5	47.6	11.9	35.7	47.6	40.0	M10	140	60	V40A				140	60	V40A SS

V | TYPE B | THREAD AND CUP FIXING

MILD STEEL, NYLON OR STAINLESS STEEL BALL



ball dia.	UNITS WITH MILD STEEL BALL							UNITS WITH NYLON BALL			COMPLETELY STAINLESS					
	A	B	C	D	E	F	G	ball up load	ball down load	ref	ball up load	ball down load	ref	ball up load	ball down load	ref
19	32.1	25.4	4.7	25.5	30.2	35.0	M8	25	10	V19B	20	10	V19B NY	25	10	V19B SS
25	39.7	32.5	6.3	33.4	39.7	33.0	M8	55	25	V25B	25	10	V25B NY	55	25	V25B SS
31	73.0	49.7	8.0	34.0	42.0	50.0	M10	125	55	V31B				125	55	V31B SS
40	55.5	49.0	11.9	42.9	54.8	42.0	M10	140	60	V40B				140	60	V40B SS

i All dimensions are in mm and all loadings are in kg unless otherwise stated