

AP

POLYURETHANE TYRE | ALUMINIUM CENTRE



wheel diameter	tread width	hub width	bore diameter	load capacity	used in castor series	ball bearing
100	50	60	20	350	V50Q VSL VSH 2VSH	G 100 APJ 20
125	50	60	20	450	V50Q VSL VSH 2VSH	G 125 APJ 20
150	50	60	20	550	VSL VSH 2VSH	G 150 APJ 20
160	50	60	20	550	V50Q	G 160 APJ 20
200	50	60	20	800	V50Q VSL VSH 2VSH	G 200 APJ 20



EAP

'ERGONOMIC' CROWN TREAD POLYURETHANE TYRE | ALUMINIUM CENTRE



wheel diameter	tread width	hub width	bore diameter	load capacity	used in castor series	ball bearing
100	40	60	17	300	V50Q VSL VSH	G 100 EAPJ 17
125	40	60	17	350	V50Q VSL VSH	G 125 EAPJ 17
150	40	60	17	450	V50Q VSL VSH	G 150 EAPJ 17
200	40	60	17	520	V50Q VSL VSH	G 200 EAPJ 17

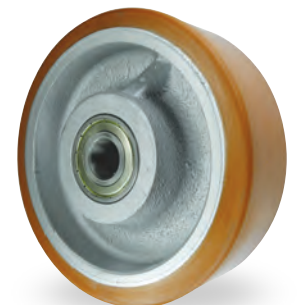


PT

POLYURETHANE TYRE | CAST IRON CENTRE



wheel diameter	tread width	hub width	bore diameter	load capacity	used in castor series	ball bearing
100	49	60	20	350	V50Q VSL VSH 2VSH	G 100 PTJ 20
125	50	60	20	450	V50Q VSL VSH 2VSH	G 125 PTJ 20
150	50	60	20	800	VSL VSH 2VSH	G 150 PTJ 20
160	50	60	20	800	V50Q	G 160 PTJ 20
200	50	60	20	1000	V50Q VSL VSH 2VSH	G 200 PTJ 20
250	50	60	25	1300	V50Q VSH 2VSH	G 250 PTJ 25



i All dimensions are in **mm** and all loadings are in **kg** unless otherwise stated

HEAD OFFICE & WAREHOUSE: 5 CENTURY PARK PACIFIC ROAD BROADHEATH ALTRINCHAM CHESHIRE WA14 5BJ t: 0161 928 9617 e: SALES@VARLEY.CO.UK
MIDLANDS, SOUTH t: 01952 462527 e: MIDSALSALES@VARLEY.CO.UK