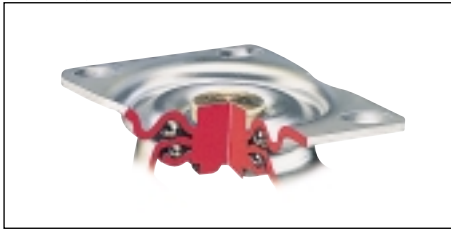


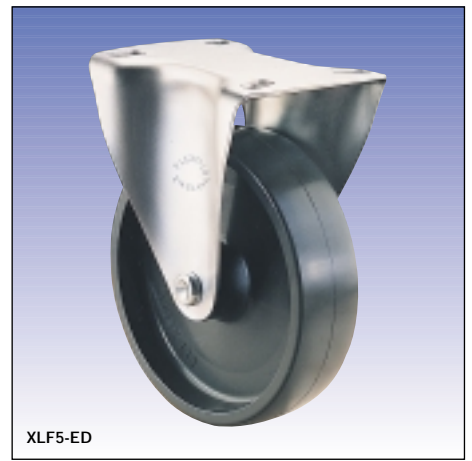
XL/XLF series



- Top plate fixing.
- Double ball bearing swivel head.
- Swivel castors conform to ISO 2184, Class 1 & 2.
- Matching fixed castors.



XL5-ED



XLF5-ED

Chrome plated castors

whl dia	fitted height	swivel radius	tread width	wheel		load capacity	plain bore wheel			roller bearing wheel			ball bearing wheel		
				centre	tyre		swivel	fixed	rep wheel	swivel	fixed	rep wheel	swivel	fixed	rep wheel
75	97	60	25	polypropylene		60	XL-E314	XLF-E31	WED-325						
			22	polypropylene	grey rubber	45	XL-P314	XLF-P31	WRP-378				XL-PB314	XLF-PB31	WRP-378B
			22	polypropylene	antistatic black rubber	22	XL-P314A	XLF-P31A	WRP-378A						
100	122	76	25	polypropylene		75	XL-E414	XLF-E41	WED-425						
			22	polypropylene	grey rubber	50	XL-P414	XLF-P41	WRP-478				XL-PB414	XLF-PB41	WRP-478B
			22	polypropylene	antistatic black rubber	25	XL-P414A	XLF-P41A	WRP-478A						
125	155	98	35	polypropylene		125	XL5-ED	XLF5-ED	WED-51M12	XL5-EDB	XLF5-EDB	WED-51RBM12			
			35	polypropylene	grey cushion rubber	90	XL5-PSW	XLF5-PSW	WPS-51WM12	XL5-PSBW	XLF5-PSBW	WPS-51RBWM12			
			35	polypropylene	antistatic black rubber	45							XL5-PSBA	XLF5-PSBA	WPS-51BBM8A

Zinc plated castors

whl dia	fitted height	swivel radius	tread width	wheel		load capacity	plain bore wheel			roller bearing wheel			ball bearing wheel		
				centre	tyre		swivel	fixed	rep wheel	swivel	fixed	rep wheel	swivel	fixed	rep wheel
75	97	60	25	polypropylene		60	XL-E324	XLF-E32	WED-325						
			22	polypropylene	grey rubber	45	XL-P324	XLF-P32	WRP-378						
			22	polypropylene	antistatic black rubber	22	XL-P324A	XLF-P32A	WRP-378A						
100	122	76	25	polypropylene		75	XL-E424	XLF-E42	WED-425						
			22	polypropylene	grey rubber	50	XL-P424	XLF-P42	WRP-478						
			22	polypropylene	antistatic black rubber	25	XL-P424A	XLF-P42A	WRP-478A						

Standard fixings

XL3
XL4

- = 83 x 57mm
- = 65 x 40mm
- = 55 x 40mm
- ⚙ = M6

XLF3
XLF4

- = 67 x 45mm
- = 54 x 25mm
- ⚙ = M6

XL5

- = 96 x 78mm
- = 80 x 60mm
- = 76 x 44.5mm
- ⚙ = M8

XLF5

- = 105 x 86mm
- = 80 x 60mm
- = 76 x 44.5mm
- ⚙ = M8

FIXING BOLTS & NUTS AVAILABLE
Page 31

Adaptions

Spring Attachment
For shock absorption
Available on 125mm XL series swivel castors without other adaptions

NOTE:
Swivel radius is increased to 118mm
Height is increased to 168mm
Load capacity is limited to 32kg
To order add suffix 'SPR' to castor code

Footbrake (as illustrated on page 18)
Foot operated pedal brakes the wheel
Available on all XL series swivel castors
NOTE: Swivel radius is increased as follows
XL3, XL4 to 85mm, XL5 to 105mm
To order add suffix 'BR' to castor code

Swivel & Wheel Brake (as illustrated on page 17)
Foot operated pedal brakes both the swivel head and wheel
Available on 125mm XL series swivel castors
NOTE: Swivel radius is increased to 122mm
To order add suffix 'SWB' to castor code

Threadguards
(standard with PB wheels)
Prevent threads, string etc from jamming the wheel
Available on XL/XLF series castors fitted with P, ED, EDB, PSW & PSBW wheels
To order add suffix 'G' to castor code



- Single hole fixing.
- Double ball bearing swivel head.

Chrome plated castors

whl dia	fitted height	swivel radius	tread width	wheel		load capacity	plain bore wheel		roller bearing wheel		ball bearing wheel	
				centre	tyre		swivel	rep wheel	swivel	rep wheel	swivel	rep wheel
75	97	60	25	polypropylene		60	XL-E313	WED-325				
			22	polypropylene	grey rubber	45	XL-P313	WRP-378			XL-PB313	WRP-378B
			22	polypropylene	antistatic black rubber	22	XL-P313A	WRP-378A				
100	122	76	25	polypropylene		75	XL-E413	WED-425				
			22	polypropylene	grey rubber	50	XL-P413	WRP-478			XL-PB413	WRP-478B
			22	polypropylene	antistatic black rubber	25	XL-P413A	WRP-478A				
125	155	98	35	polypropylene		125	XL5-EDBH10	WED-51M12	XL5-EDBBH10	WED-51RBM12		
			35	polypropylene	grey cushion rubber	90	XL5-PSWBH10	WPS-51WM12	XL5-PSBWBH10	WPS-51RBWM12		
			35	polypropylene	antistatic black rubber	45					XL5-PSBABH10	WPS-51BBM8A

Zinc plated castors

whl dia	fitted height	swivel radius	tread width	wheel		load capacity	plain bore wheel		roller bearing wheel		ball bearing wheel	
				centre	tyre		swivel	rep wheel	swivel	rep wheel	swivel	rep wheel
75	97	60	25	polypropylene		60	XL-E323	WED-325				
			22	polypropylene	grey rubber	45	XL-P323	WRP-378				
			22	polypropylene	antistatic black rubber	22	XL-P323A	WRP-378A				
100	122	76	25	polypropylene		75	XL-E423	WED-425				
			22	polypropylene	grey rubber	50	XL-P423	WRP-478				
			22	polypropylene	antistatic black rubber	25	XL-P423A	WRP-478A				


Standard fixings



☛ = M10



Adaptions

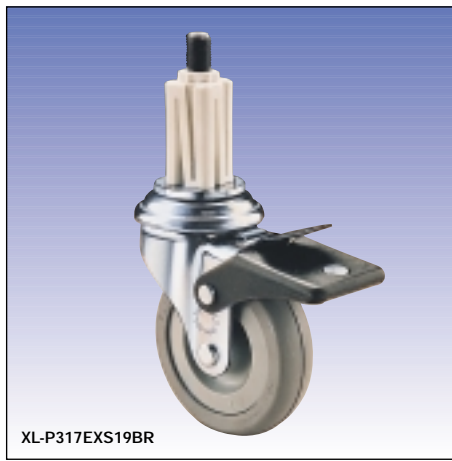


Swivel & wheel brake
Foot operated pedal brakes both the swivel head and wheel
Available on 125mm XL series swivel castors
NOTE: Swivel radius is increased to 122mm
To order add suffix '**SWB**' to castor code

Spring Attachment (as illustrated on page 16) for shock absorption
Available on 125mm XL series swivel castors without other adaptions
NOTE: Swivel radius is increased to 118mm, height is increased to 168mm, load capacity is limited to 32kg
To order add suffix '**SPR**' to castor code

Threadguards
(standard with PB wheels)
Prevent threads, string etc from jamming the wheel
Available on XL series castors fitted with P, ED, EDB, PSW & PSBW wheels
To order add suffix '**G**' to castor code

Footbrake (as illustrated on page 18)
Foot operated pedal brakes the wheel
Available on all XL series swivel castors
NOTE: Swivel radius is increased as follows
XL3, XL4 to 85mm, XL5 to 105mm
To order add suffix '**BR**' to castor code



XL-P317EXS19BR

- Expanding adaptor fixing.
- Double ball bearing swivel head.

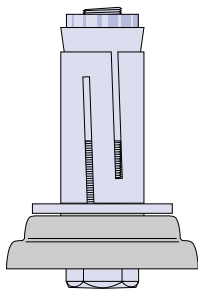
Chrome plated castors

whl dia	fitted height	swivel radius	tread width	wheel		load capacity	plain bore wheel		roller bearing wheel		ball bearing wheel	
				centre	tyre		swivel	rep wheel	swivel	rep wheel	swivel	rep wheel
75	100	60	25	polypropylene		60	XL-E317	WED-325				
			22	polypropylene	grey rubber	45	XL-P317	WRP-378			XL-PB317	WRP-378B
			22	polypropylene	antistatic black rubber	22	XL-P317A	WRP-378A				
100	125	76	25	polypropylene		75	XL-E417	WED-425				
			22	polypropylene	grey rubber	50	XL-P417	WRP-478			XL-PB417	WRP-478B
			22	polypropylene	antistatic black rubber	25	XL-P417A	WRP-478A				
125	155	98	35	polypropylene		125	XL5-EDEX	WED-51M12	XL5-EDBEX	WED-51RBM12		
			35	polypropylene	grey cushion rubber	90	XL5-PSWEX	WPS-51WM12	XL5-PSBWEX	WPS-51RBWM12		
			35	polypropylene	antistatic black rubber	45					XL5-PSBAEX	WPS-51BBM8A

Zinc plated castors

whl dia	fitted height	swivel radius	tread width	wheel		load capacity	plain bore wheel		roller bearing wheel		ball bearing wheel	
				centre	tyre		swivel	rep wheel	swivel	rep wheel	swivel	rep wheel
75	100	60	25	polypropylene		60	XL-E327	WED-325				
			22	polypropylene	grey rubber	45	XL-P327	WRP-378				
			22	polypropylene	antistatic black rubber	22	XL-P327A	WRP-378A				
100	125	76	25	polypropylene		75	XL-E427	WED-425				
			22	polypropylene	grey rubber	50	XL-P427	WRP-478				
			22	polypropylene	antistatic black rubber	25	XL-P427A	WRP-478A				

Standard fixings



Expanding Adaptors

The range of expanders have been designed for use with round or square mild steel tubing. To order add suffix, shown in table below, to castor code.

tube shape	effective range (mm)	colour	reference
○	15.8 - 18.0	brown	P16
○	19.0 - 20.3	white	P19
○	21.8 - 24.5	grey	P22
○	25.0 - 28.5	black	P25
□	19.0 - 20.3	white	S19
□	21.8 - 24.5	grey	S22
□	25.0 - 28.5	black	S25

Please note:

- If expanding adaptors are being used with any material other than mild steel please ask for advice.
- Square adaptors are not recommended for mild steel 18 gauge tubing.
- Round expander 'P16' is only suitable for 75 and 100mm XL castors

Adaptions



Footbrake

Foot operated pedal brakes the wheel. Available on all XL series swivel castors. NOTE: Swivel radius is increased as follows XL3, XL4 to 85mm, XL5 to 105mm. To order add suffix 'BR' to castor code

Swivel & Wheel Brake

Foot operated pedal brakes both the swivel head and wheel. Available on 125mm XL series swivel castors. NOTE: Swivel radius is increased to 122mm. To order add suffix 'SWB' to castor code

Spring Attachment (as illustrated on page 16) for shock absorption. Available on 125mm XL series swivel castors without other adaptions. NOTE: Swivel radius is increased to 118mm, height is increased to 168mm, load capacity is limited to 32kg. To order add suffix 'SPR' to castor code

Threadguards (standard with PB wheels). Prevent threads, string etc from jamming the wheel. Available on XL series castors fitted with P, ED, EDB, PSW & PSBW wheels. To order add suffix 'G' to castor code