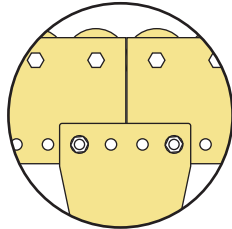
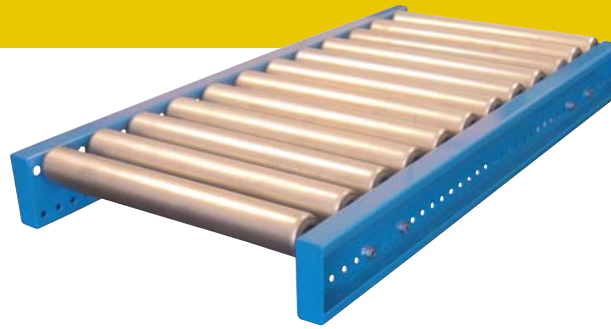




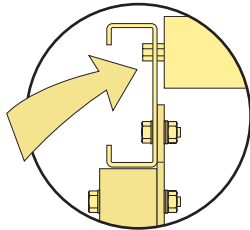
Conveyor Track

High quality general purpose conveyor. Supplied fitted with 50mm diameter medium duty steel rollers.

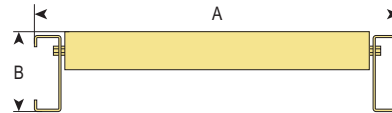
Track and Stands sold separately.



Use a Conveyor Track Stand at join of tracks to create longer system.



Unique profile and construction of conveyor track ensures simple removal of spring loaded rollers as well as replacement when necessary.

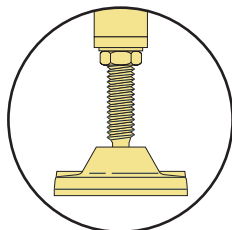


Track length* (mm)	Roller length (mm)	Roller pitch (mm)	Track width A (mm)	Overall height B (mm)	Load capacity per roller (kg)	Conveyor track Order code
1500	400	78	485	105	100	CTS50X400S15P078
1500	400	104	485	105	100	CTS50X400S15P104
1500	400	156	485	105	100	CTS50X400S15P156
1500	600	78	685	105	100	CTS50X600S15P078
1500	600	104	685	105	100	CTS50X600S15P104
1500	600	156	685	105	100	CTS50X600S15P156
2000	400	78	485	105	100	CTS50X400S20P078
2000	400	104	485	105	100	CTS50X400S20P104
2000	400	156	485	105	100	CTS50X400S20P156
2000	600	78	685	105	100	CTS50X600S20P078
2000	600	104	685	105	100	CTS50X600S20P104
2000	600	156	685	105	100	CTS50X600S20P156
3000	400	78	485	105	100	CTS50X400S30P078
3000	400	104	485	105	100	CTS50X400S30P104
3000	400	156	485	105	100	CTS50X400S30P156
3000	600	78	685	105	100	CTS50X600S30P078
3000	600	104	685	105	100	CTS50X600S30P104
3000	600	156	685	105	100	CTS50X600S30P156

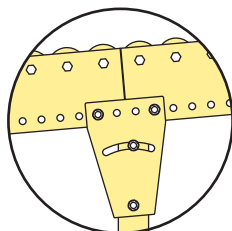
\* Nominal track length. Will vary slightly depending on roller pitch

Conveyor Track Stands

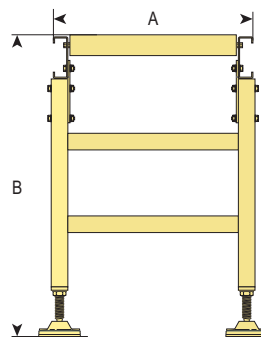
Supplied complete with all necessary fixing bolts, nuts etc.



Fitted with height adjustable levelling feet.



Gradient can be created simply by loosening bolts and pivoting Track Stand fixing plate



To suit track width A (mm)	Fitted height to top of roller B minimum (mm)	B maximum (mm)	Track stand Order code
485	525	575	TS485X550
485	625	675	TS485X650
485	725	775	TS485X750
485	825	875	TS485X850
685	525	575	TS685X550
685	625	675	TS685X650
685	725	775	TS685X750
685	825	875	TS685X850

NOTE: All dimensions are in mm and all loadings in kg unless otherwise stated