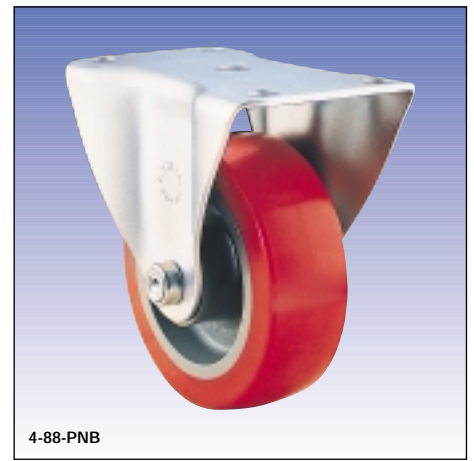
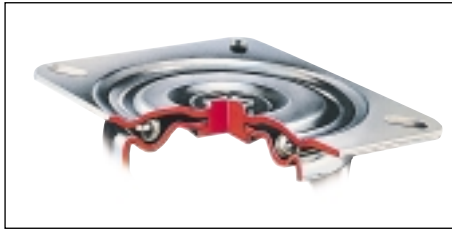


61/88 series



- Top plate fixing.
- Ball bearing swivel head.
- Swivel castors conform to ISO 2184.
- Matching fixed castors.



whl dia	fitted height	swivel radius	tread width	wheel		load capacity	plain bore wheel			roller bearing wheel		
				centre	tyre		swivel	fixed	rep wheel	swivel	fixed	rep wheel
50	64	42	19	nylon		54	9-61-NY	9-88-NY	WNY-20			
			22	nylon	blue rubber	27	9-61-RN	9-88-RN	WRN-20			
			22	mazak *		54	9-61-CI	9-88-CI	WCI-20			
63	81	54	22	nylon		122	2-61-NY	2-88-NY	WNY-25			
			25	nylon	blue rubber	60	2-61-RN	2-88-RN	WRN-25			
			25	mazak *		122	2-61-CI	2-88-CI	WCI-25			
75	95	62	25	nylon		170	3-61-NY	3-88-NY	WNY-3M12			
			32	nylon	blue rubber	90	3-61-RN	3-88-RN	WRN-3M12			
			32	cast iron		170	3-61-CI	3-88-CI	WCI-3M12			
			29	cast iron	polyurethane	150	3-61-SU	3-88-SU	WSU-3M12			
100	125	76	32	nylon		270	4-61-NY	4-88-NY	WNY-4M15	4-61-NYB	4-88-NYB	WNY-4RBM15
			38	nylon	blue rubber	160	4-61-RN	4-88-RN	WRN-4M15	4-61-RNB	4-88-RNB	WRN-4RBM15
			35	nylon	polyurethane	250	4-61-PN	4-88-PN	WPN-4M15	4-61-PNB	4-88-PNB	WPN-4RBM15
			38	cast iron		340	4-61-CI	4-88-CI	WCI-4M15	4-61-CIB	4-88-CIB	WCI-4RBM15
			43	cast iron	black rubber	160				4-61-RTB	4-88-RTB	WRT-4RBM15
			43	cast iron	polyurethane	295				4-61-SUB	4-88-SUB	WSU-4RBM15
125	156	98	35	nylon		365	5-61-NY	5-88-NY	WNY-5M15	5-61-NYB	5-88-NYB	WNY-5RBM15
			38	nylon	blue rubber	180	5-61-RN	5-88-RN	WRN-5M15	5-61-RNB	5-88-RNB	WRN-5RBM15
			35	nylon	polyurethane	300	5-61-PN	5-88-PN	WPN-5M15	5-61-PNB	5-88-PNB	WPN-5RBM15
			41	cast iron		475	5-61-CI	5-88-CI	WCI-5M15	5-61-CIB	5-88-CIB	WCI-5RBM15
			38	cast iron	black rubber	180	5-61-RT	5-88-RT	WRT-5M15	5-61-RTB	5-88-RTB	WRT-5RBM15
			35	cast iron	polyurethane	325				5-61-SUB	5-88-SUB	WSU-5RBM15
150	181	117	38	nylon		520	6-61-NY	61-88-NY	WNY-6M20	6-61-NYB	61-88-NYB	WNY-6RBM20
			45	nylon	blue rubber	300	6-61-RN	61-88-RN	WRN-6M20	6-61-RNB	61-88-RNB	WRN-6RBM20
			45	nylon	polyurethane	600	6-61-PN	61-88-PN	WPN-6M20	6-61-PNB	61-88-PNB	WPN-6RBM20
			45	cast iron		680	6-61-CI	61-88-CI	WCI-6M20	6-61-CIB	61-88-CIB	WCI-6RBM20
			45	cast iron	black rubber	400	6-61-RT	61-88-RT	WRT-6M20	6-61-RTB	61-88-RTB	WRT-6RBM20
			38	cast iron	polyurethane	540				6-61-SUB	61-88-SUB	WSU-61RBM20

* = mazak is a zinc based alloy

1.2 Pressed Steel Castors



Standard fixings

 961	 988	 261	 288	 361	 388
□ = 67 x 48mm ● = 54 x 25mm ▼ = M6	□ = 67 x 45mm ● = 54 x 25mm ▼ = M6	□ = 95 x 70mm ● = 76 x 44.5mm ▼ = M8	□ = 95 x 59mm ● = 76 x 35mm ▼ = M8	□ = 105 x 80mm ● = 86 x 60mm ● = 80 x 60mm ▼ = M8	□ = 102 x 64mm ● = 83 x 35mm ▼ = M8
 461	 488	 561	 588	 661	 6188
□ = 128 x 102mm ● = 105 x 80mm ● = 100 x 76mm ▼ = M10	□ = 121 x 80mm ● = 100 x 48mm ▼ = M10	□ = 162 x 133mm ● = 140 x 105mm ● = 120 x 95mm ▼ = M10	□ = 121 x 80mm ● = 100 x 48mm ▼ = M10	□ = 162 x 133mm ● = 140 x 105mm ● = 120 x 95mm ▼ = M10	□ = 155 x 113mm ● = 133 x 67mm ▼ = M10

1.2 Pressed Steel Castors



Adaptions

Footbrake
Foot operated pedal brakes the wheel

Available on 75, 100mm 61 series swivel castors. Not available with V or ST adaptations

NOTE: Swivel radius is increased as follows: 361 to 90mm, 461 to 105mm

To order add suffix 'BR' to castor code

Triangular Top Plate ▼

Available on 63, 75 & 100mm 61 series castors

To order add suffix 'V' to castor code

261-V
361-V

19

461-V

19

□ = 140 x 140mm
 ● = 73-102 x 73-102mm
 ▼ = M8

□ = 150 x 150mm
 ● = 96-114 x 96-114mm
 ▼ = M10

Threaded Stem and Nut Fitting

Available on 63 & 75mm 61 series castors

Stem is M12 x 25mm

To order add suffix 'ST' to castor code

Threadguards

Prevent threads, string etc from jamming the wheel

Available as follows

63, 75, 100 & 125mm plain bore NY wheels

100, 125 & 150mm plain bore RN, PN wheels

To order add suffix 'G' to castor code

Corrosion Free Wheel Tubes

Provide protection in wet conditions

Available on 61/88 series castors fitted with 100, 125 & 150mm plain bore NY RN PN wheels

To order add suffix 'SS' to castor code