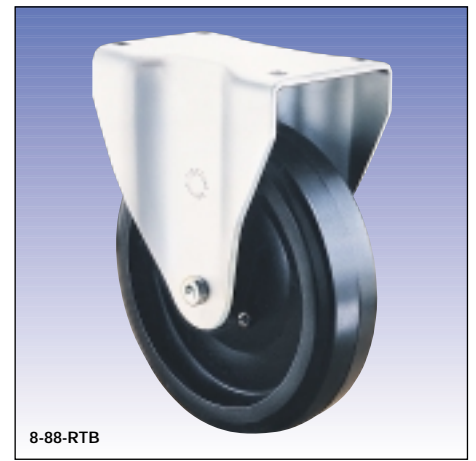
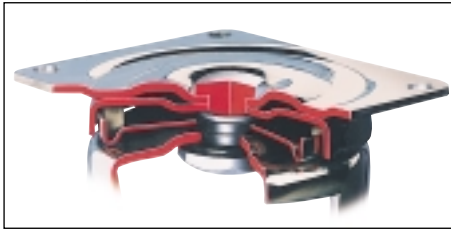


55/88 series



- Top plate fixing.
- Roller bearing swivel head.
- Swivel castors conform to ISO 2184, Class 4.
- Matching fixed castors.



whl dia	fitted height	swivel radius	tread width	wheel		load capacity	plain bore wheel			roller bearing wheel			ball bearing wheel		
				centre	tyre		swivel	fixed	rep wheel	swivel	fixed	rep wheel	swivel	fixed	rep wheel
150	197	111	38	nylon		520	6-55-NY	6-88-NY	WNY-6M20	6-55-NYB	6-88-NYB	WNY-6RBM20			
			51	phenolic		540				6-55-ANB	6-88-ANB	WAN-6RB			
			45	cast iron		1020	6-55-CI	6-88-CI	WCI-6M20	6-55-CIB	6-88-CIB	WCI-6RBM20			
			45	cast iron	black rubber	400	6-55-RT	6-88-RT	WRT-6M20	6-55-RTB	6-88-RTB	WRT-6RBM20	6-55-RTBJ	6-88-RTBJ	WRT-6BJM12
			45	cast iron	polyurethane	725				6-55-SUB	6-88-SUB	WSU-6RBM20	6-55-SUBJ	6-88-SUBJ	WSU-6BJM12
200	246	150	38	nylon		605	8-55-NY	8-88-NY	WNY-8M20	8-55-NYB	8-88-NYB	WNY-8RBM20			
			51	phenolic		725				8-55-ANB	8-88-ANB	WAN-8RB			
			45	cast iron		1090	8-55-CI	8-88-CI	WCI-8M20	8-55-CIB	8-88-CIB	WCI-8RBM20			
			51	cast iron	black rubber	585	8-55-RT	8-88-RT	WRT-8M20	8-55-RTB	8-88-RTB	WRT-8RBM20	8-55-RTBJ	8-88-RTBJ	WRT-8BJM12
			51	cast iron	polyurethane	1045				8-55-SUB	8-88-SUB	WSU-8RBM20	8-55-SUBJ	8-88-SUBJ	WSU-8BJM12

1.2 Pressed Steel Castors



Standard fixings

655
855

□ = 162 x 140mm
● = 140 x 105mm
⚙ = M10

688
888

□ = 165 x 112mm
● = 140 x 73mm
⚙ = M10

Adaptions

Swivel & Wheel Brake

Foot operated pedal brakes both the swivel head and wheel

Available on 150 and 200mm 55 series swivel castors except those with CI, CIB wheels

NOTE: Swivel radius is increased to 160mm

To order add suffix 'SWB' to castor code

Corrosion Free Wheel Tubes

Provide protection in wet conditions

Available on 55/88 series castors fitted with plain bore NY wheels

To order add suffix 'SS' to castor code

